

GETE means

Grit

Enthusiastic

Trust worthy

Easy to work with

The logo for GETE Metal. It features the word "GETE" in a bold, black, sans-serif font. The letter "G" is stylized with a white gear icon inside it. To the right of "GETE" is the word "Metal" in a bold, black, sans-serif font.

Hebei Gete Metal Product Sales Co.,Ltd
ADD:No.3 Xiumen Street,Shijiazhuang,China
Zip Code:050019
Email:info@getemetal.com
Tel:+86-311-66189256

Profile
Mechanical products
Agricultural & Constructiion machine parts
Valve & pump parts
Lost wax casting

page 1
page 2
page 3
page 4
page 5



About us

Hebei Gete Metal Product Sales Co.,Ltd is a professional supplier for OEM casting, forging and machine spare parts in China. Our team have been in this field for nearly 20 years and have rich experience to meet the requirements of our customers .

Industry we served: Agricultural and construction machine, Power transmission, Valve & pump, Food industry

Market: Europe and North America

Manufacture Process: Casting, Forging, Machining, Stamping and so on

Standard we follow: ISO, DIN, EN, ASTM, AISI

Typical Products: Gearbox, Shaft, Machine Cover, Counter Weight, Pulleys, Valve & Pump Housing



Facility: Sand Treatment Line
Type: Horizontal typing



Facility: Core shooting machining
Area: 2500 Square Meter



Facility: Forging Machine
Pressure: 1600MT



Facility: Machining Shop
Process: Turning, Milling, CNC



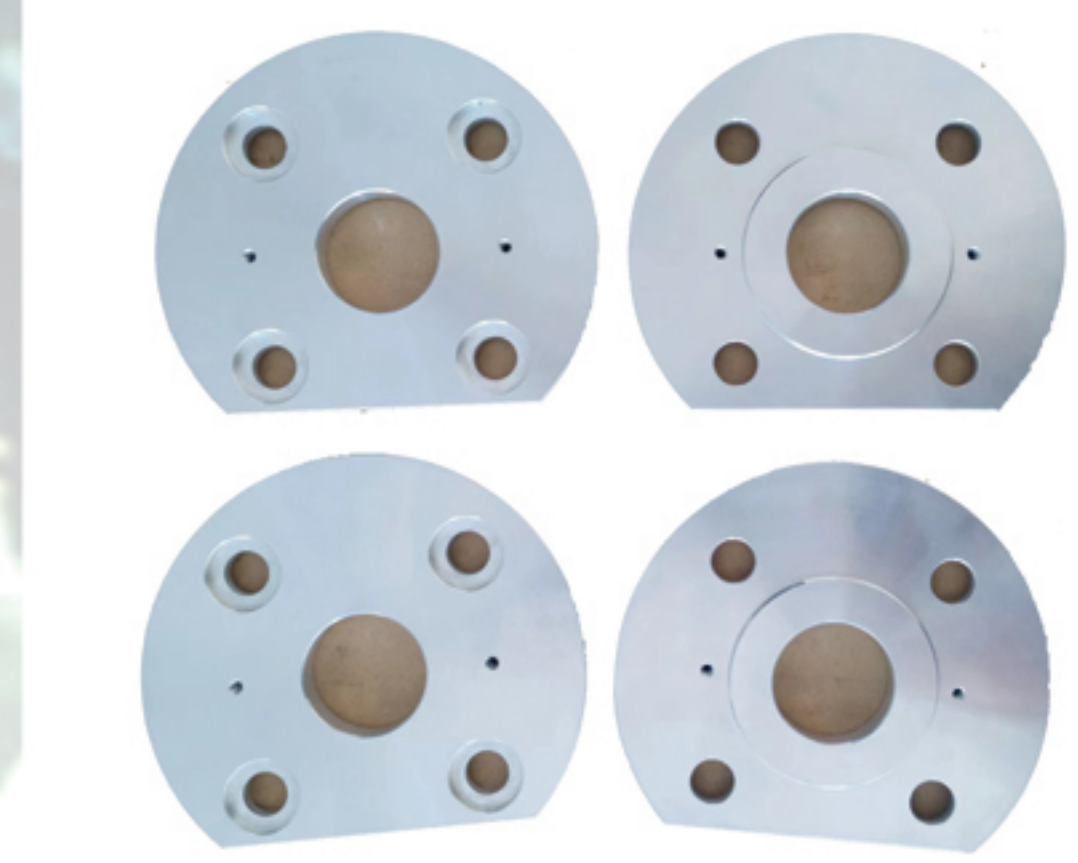
Facility: Spectrometer
Test Element: C, Si, Mn, S, P, Cr, Ni, Mo...



Facility: Tensile Machine
Process: Tensile Strength
Yield Strength

Certificate:





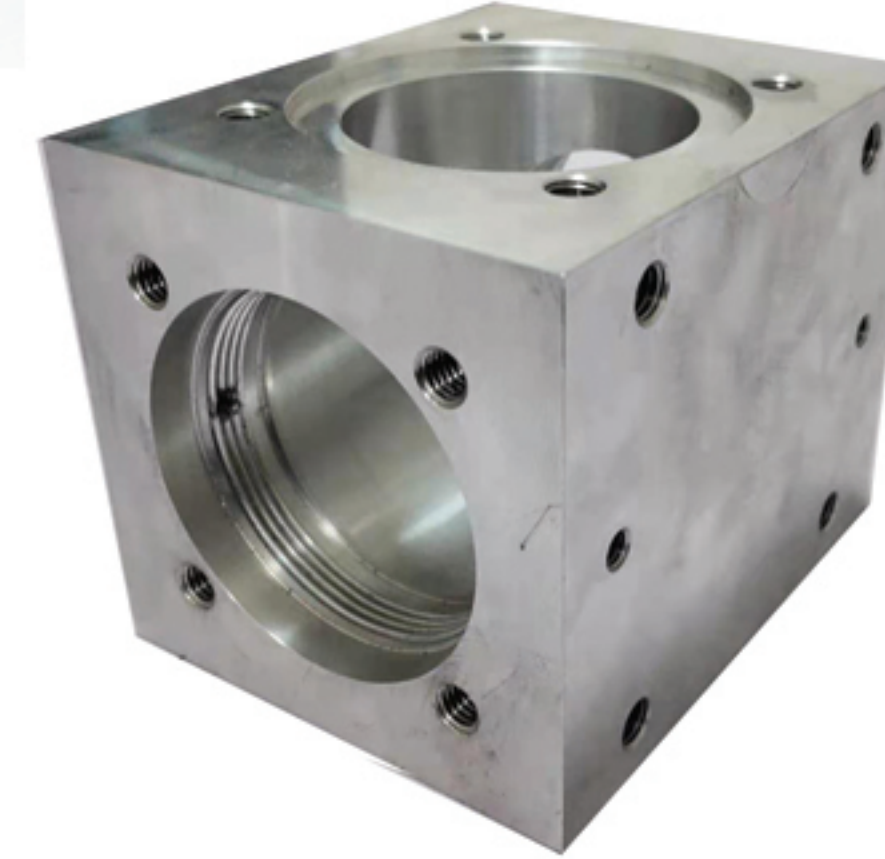
Material:Al
Weight: 0.5kgs
Size: D100
Process: Al bar+Machining



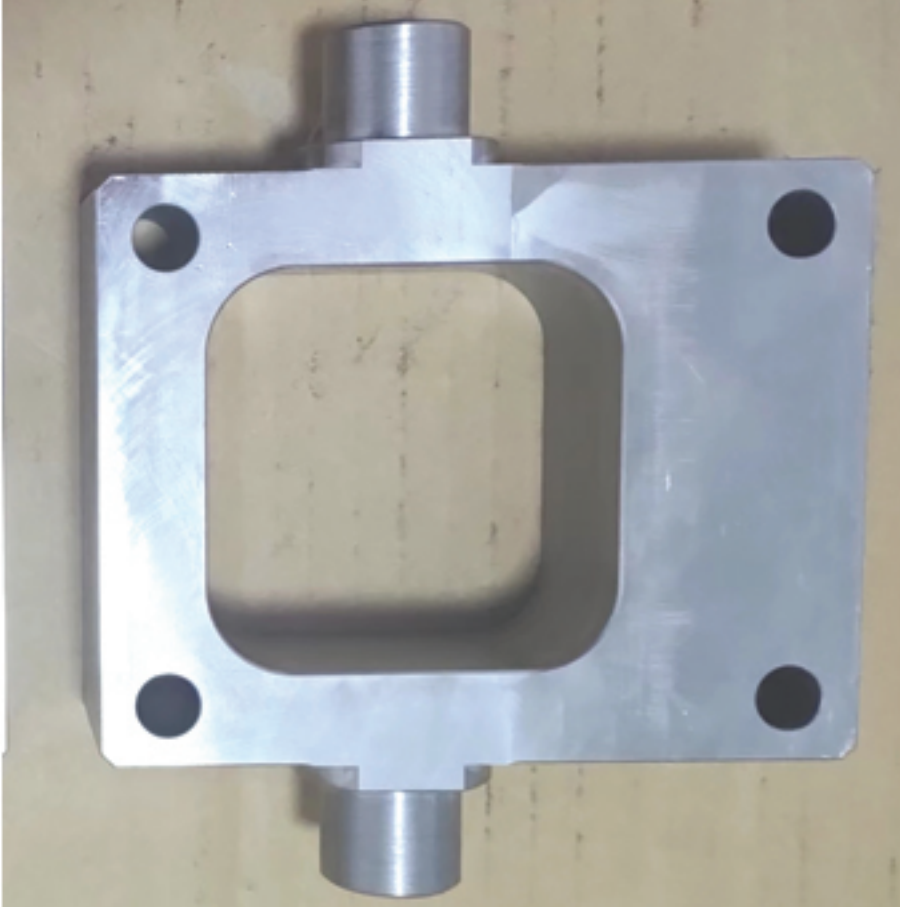
Material:Al
Weight: 2kgs
Size: 125mm*125mm
Process: Al bar+Machining



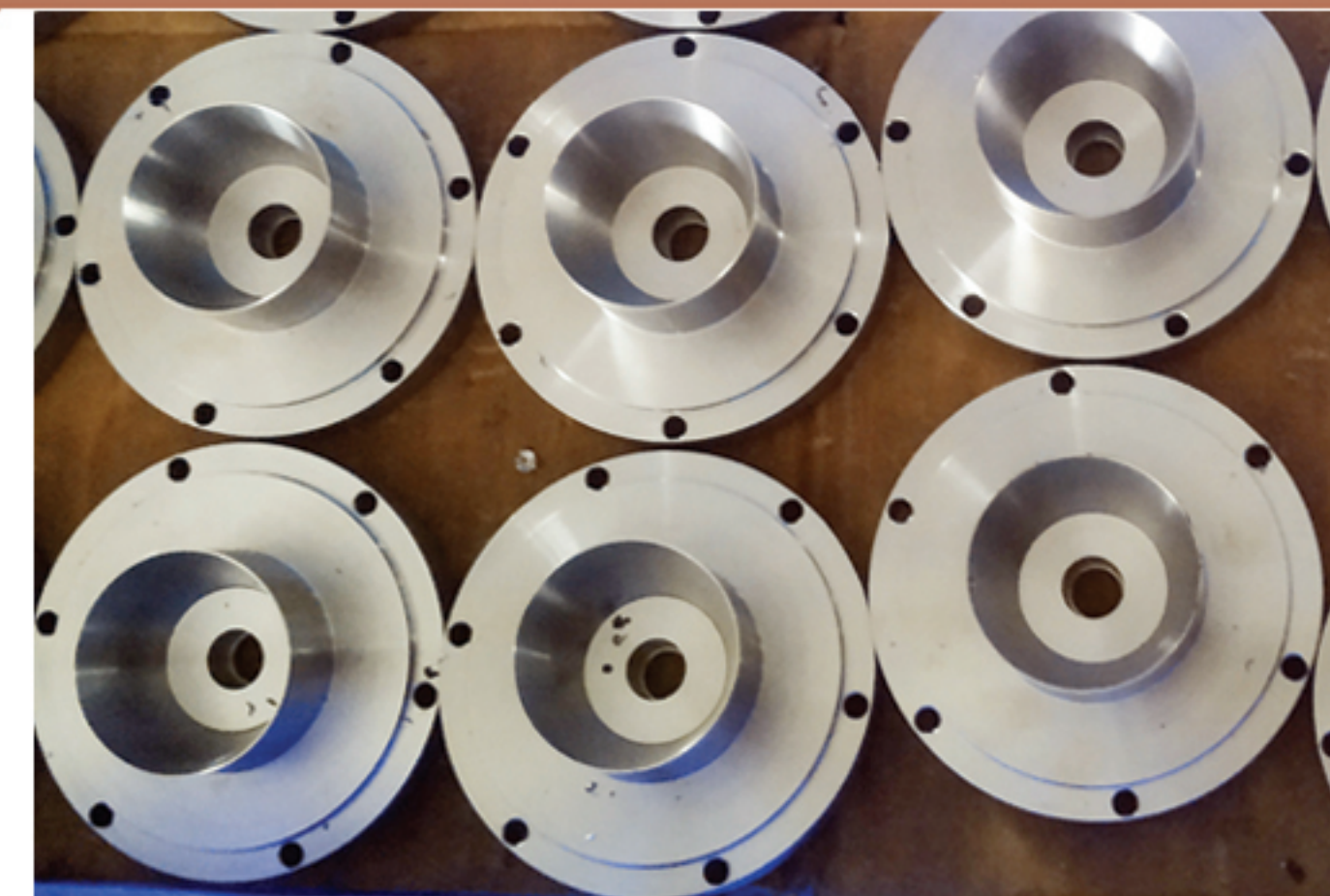
Material:C45 or 42CrMo4
Weight: 0.5-30kgs
Size: D100*1000mm
Process: Steel bar+Machining



Material:Al
Weight: 2kgs
Size: 100mm*100mm
Process: Al plate+Machining



Material:Carbon Steel
Weight: 1-30kgs
Size: 120mm*300mm
Process: Steel Plate+Machining



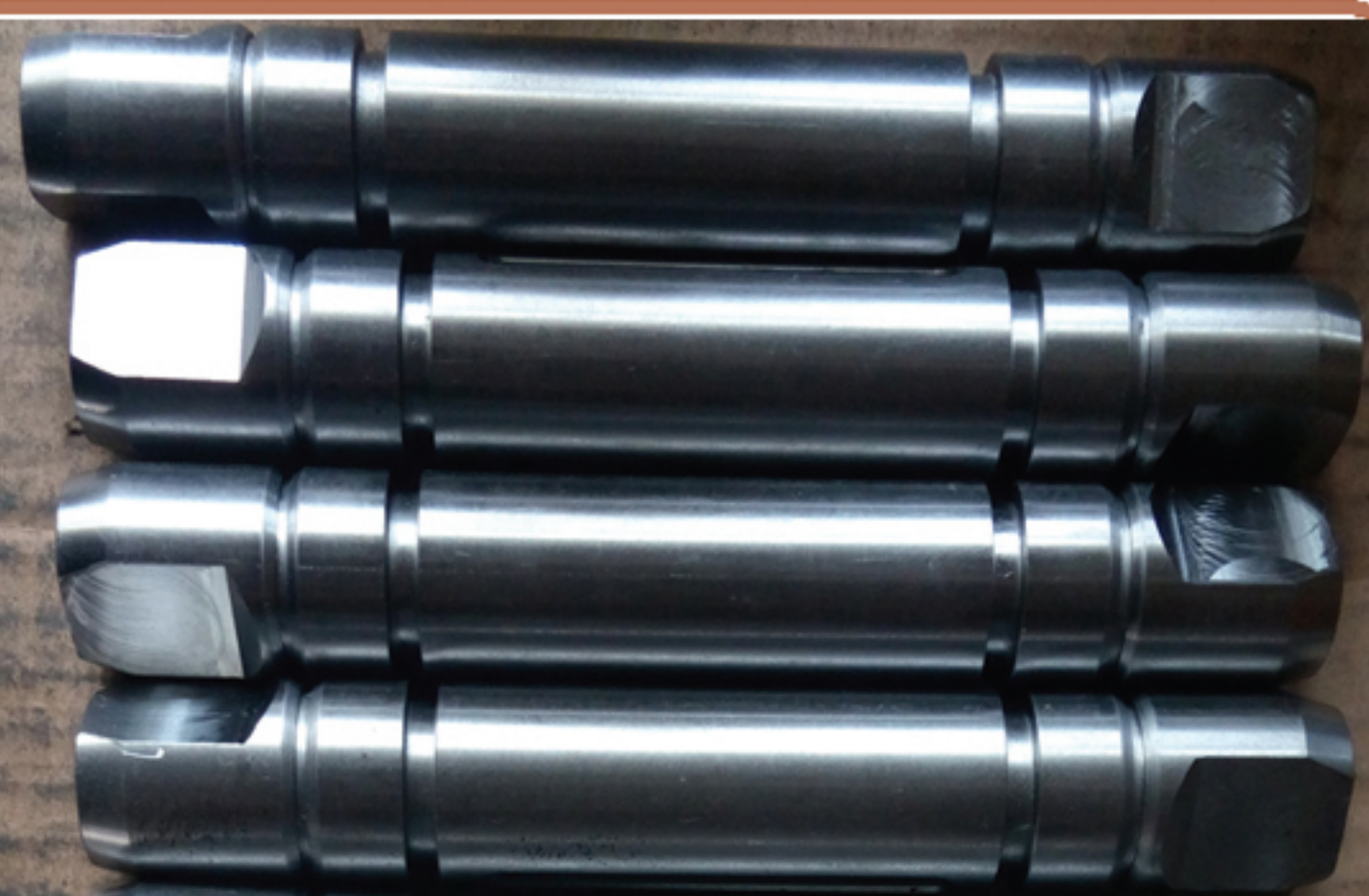
Material:Stainless Steel
Weight: 3kg
Size: D150mm*100mm
Process: SS Casting+Machining



Material:Stainless Steel
Weight: 1kg
Size: D50mm*150mm
Process: SS Steel bar+Machining



Material:Q345D Tube
Weight: 3kg
Size: D130mm*50mm
Process: Tube+Machining



Material: Steel
Weight: 1kg
Size: D20mm*150mm
Process: Steel bar+Machining



Material: Steel
Weight: 10kg
Size: 150mm*250mm*100mm
Process: Plate+cutting+Machining



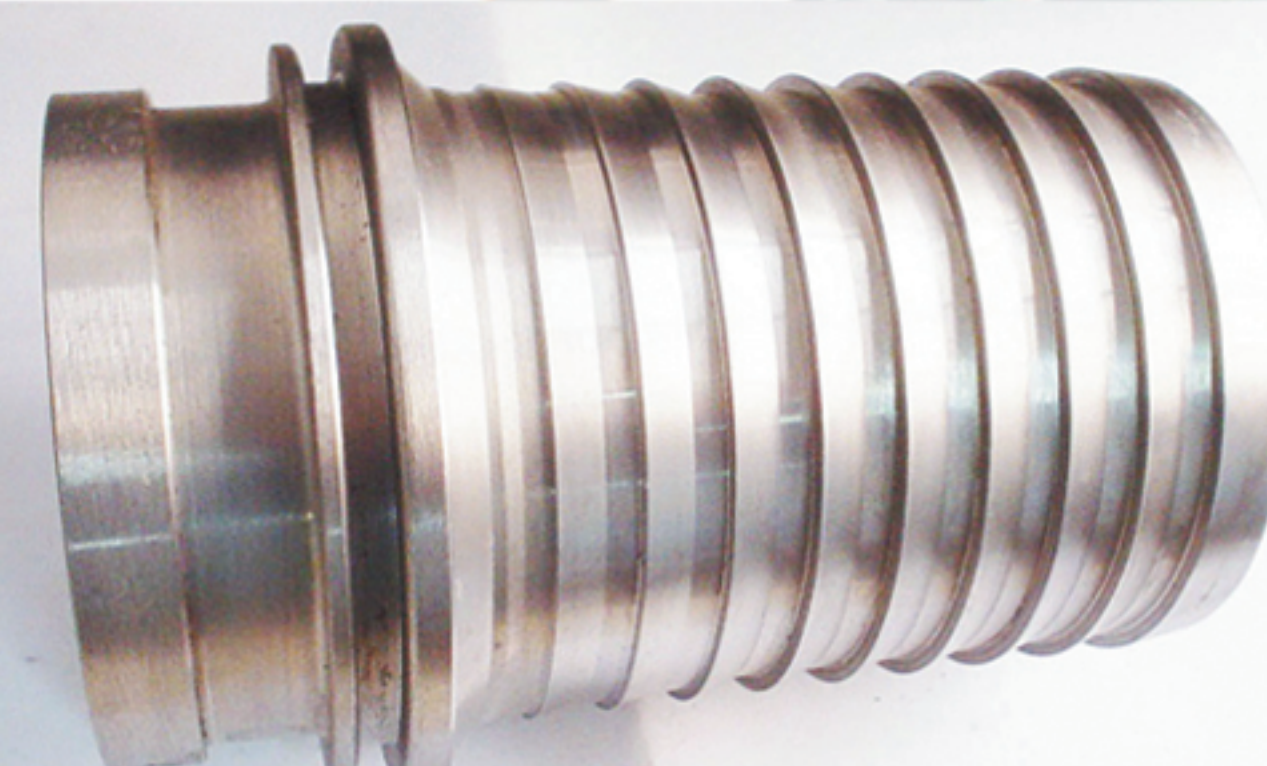
Material: Steel
Weight: 10kg
Size: 150mm*250mm
Process: Forging+Machining



Material: Steel
Weight: 2kg
Size: 80mm*100mm*40mm
Process: Forging+Machining



Tolerance: ISO 8062 CT 10
Process: Green Sand
Material: Gray Iron
Length Capacity: 50-1000mm
Weight: 30kgs
Machining: Drilling



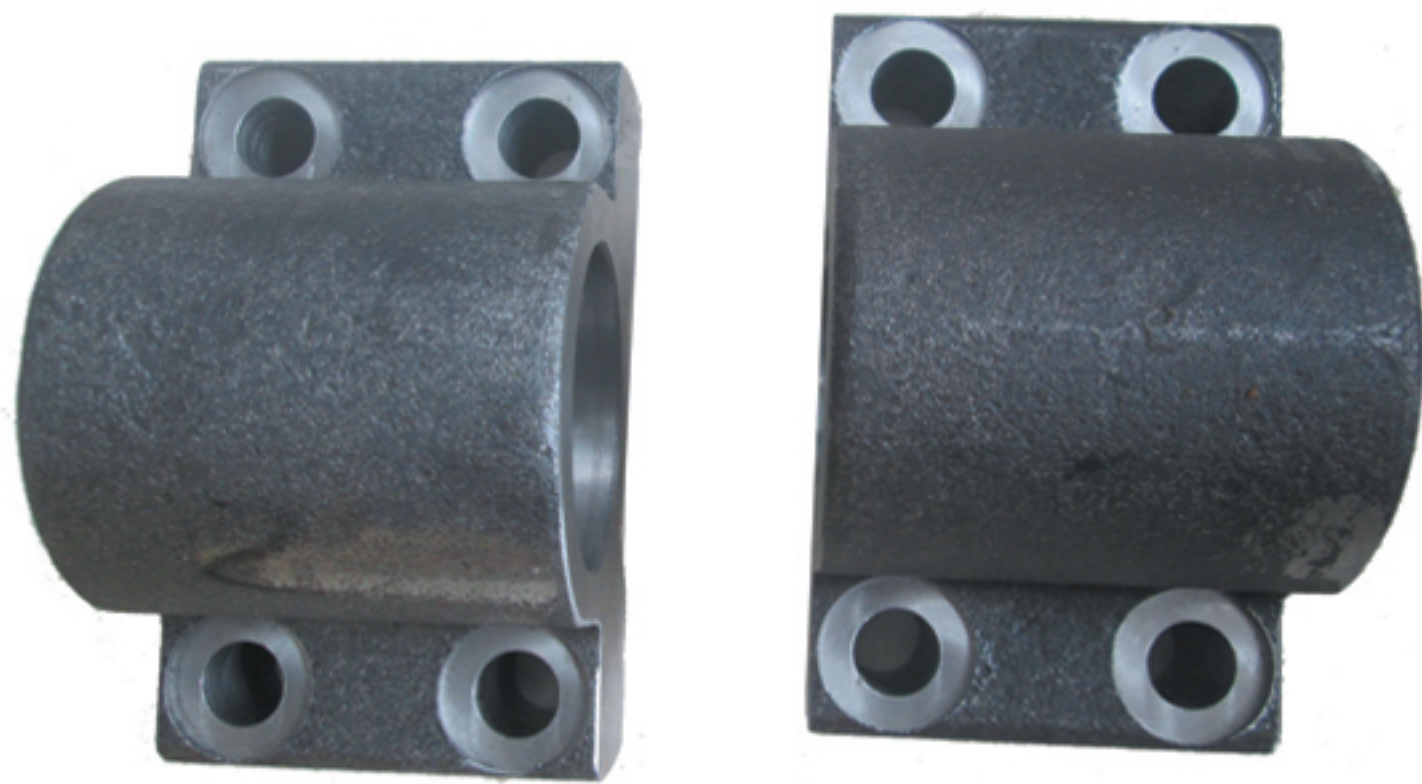
Tolerance: ISO2768-M
Process: Machining from Pipe
Material: 16Mn
Length Capacity: 50-1000mm
Weight: 4kgs
Machining: Turning



Tolerance: ISO 8062 CT 10
Process: Green Sand
Material: Gray Iron
Length Capacity: 50-1000mm
Weight: 25kgs
Machining: Turning, rilling



Tolerance: ISO 8062 CT 11
Process: Green Sand
Material: Carbon Steel
Length Capacity: 50-1000mm
Weight: 500kgs
Machining: Turning, Drilling



Tolerance: ISO 8062 CT 10
Process: Forging
Material: Gray Iron
Length Capacity: 50-1000mm
Weight: 5kgs
Machining: Turning, Drilling, CNC



Tolerance: ISO 8062 CT 10
Process: Resin Sand
Material: Gray Iron
Length Capacity: 50-1000mm
Weight: 30kgs
Machining: Turning, Drilling



Tolerance: ISO 8062 CT 10
Process: Green Sand
Material: Gray Iron or Ductile Iron
Length Capacity: 50-1000mm
Weight: 25kgs
Machining: Turning, Drilling



Tolerance: ISO 8062 CT 10
Process: Shell Moulding
Material: Nodular Iron
Length Capacity: 50-1000mm
Weight: 8kgs
Machining: Turning, Milling



Tolerance: ISO 8062 CT 10
Process: Resin Sand
Material: Ductile Iron
Length Capacity: 50-1000mm
Weight: 8kgs
Machining: Turning, Milling



Tolerance: ISO 8062 CT 10
Process: Resin Sand
Material: Gray Iron
Length Capacity: 50-1000mm
Weight: 200kgs
Machining: Turning, Drilling



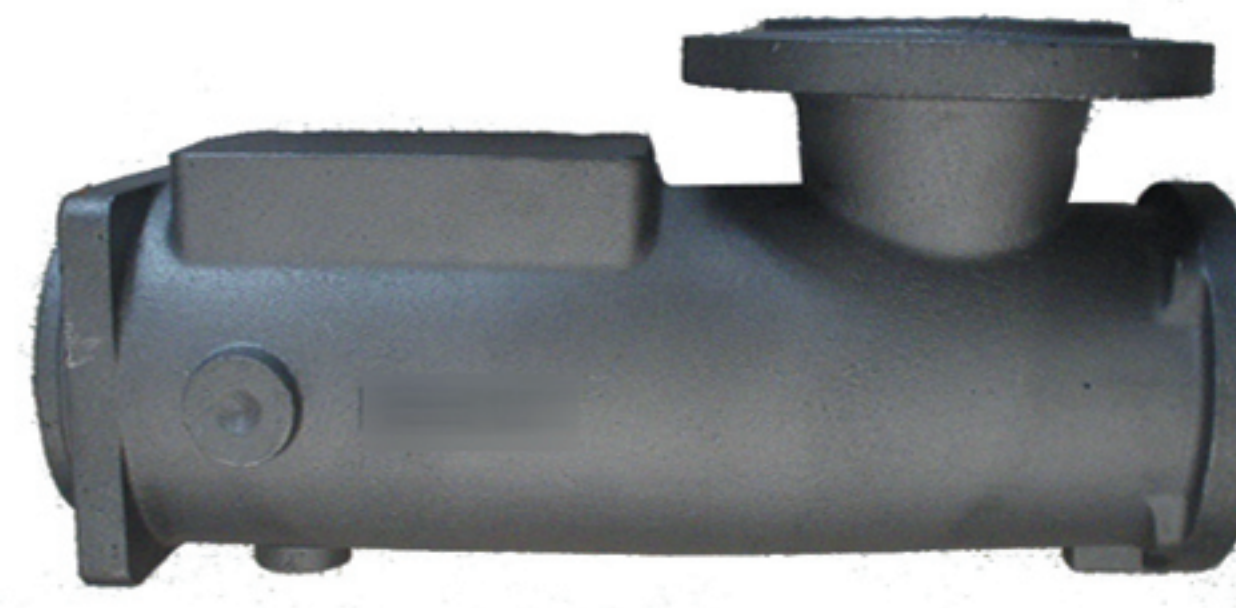
Tolerance: ISO 8062 CT 10
Process: Resin Sand
Material: Gray Iron
Length Capacity: 50-1000mm
Weight: 8kgs
Machining: Turning, Milling



Tolerance: ISO 8062 CT 10
Process: Resin Sand
Material: Nodular Iron
Length Capacity: 50-1000mm
Weight: 10kgs
Machining: Threading, Turning



Tolerance: ISO 8062 CT 10
Process: Green Sand
Material: Nodular Iron
Length Capacity: 50-1000mm
Weight: 15kgs
Machining: Turning,Drilling,Milling



Tolerance: ISO 8062 CT 10
Process: Resin Sand
Material: Gray Iron
Length Capacity: 50-1000mm
Weight: 18kgs
Machining: Turning,Milling

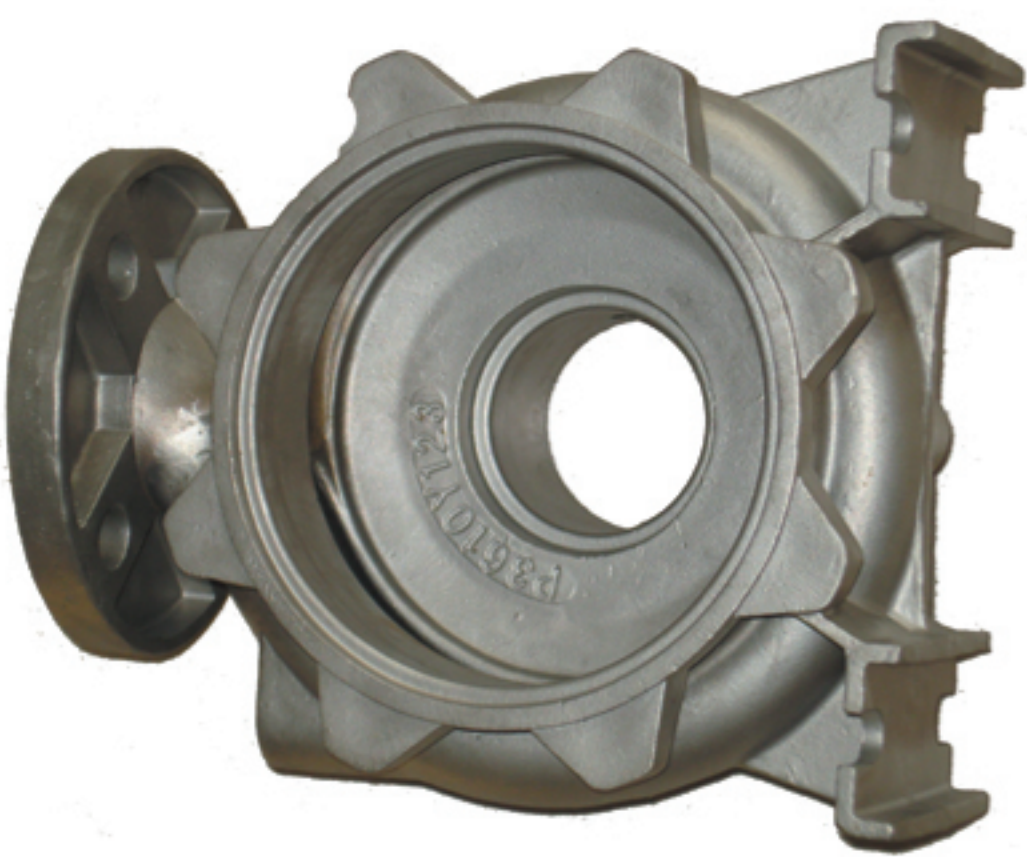


Tolerance: ISO 8062 CT 9
Process: Resin Sand
Material: Nodular Iron
Length Capacity: 50-1000mm
Weight: 41kgs
Machining: Turning,Drilling,Milling



DN800
 PN16
 GGG50

Tolerance: ISO 8062 CT 11
Process: Resin Sand
Material: Nodular Iron
Length Capacity: 50-1000mm
Weight: 800kgs
Machining: Turning,Milling



Tolerance: ISO 8062 CT 7
Process: Lost Wax Casting
Material: SS304
Length Capacity: 20-500mm
Weight: 23kgs
Machining: Turning,Drilling,Milling



Tolerance: ISO 8062 CT 11
Process: Green Sand
Material: Gray Iron
Length Capacity: 50-1000mm
Weight: 34kgs
Machining: Turning,Milling



Tolerance: ISO 8062 CT 10
Process: Resin Sand
Material: Nodular Iron
Length Capacity: 50-1000mm
Weight: 7kgs
Machining: Turning,Milling



Tolerance: ISO 8062 CT 9
Process: Shell Moulding
Material: Nodular Iron
Length Capacity: 50-1000mm
Weight: 3.5kgs
Machining: Turning,Milling



Tolerance: ISO 8062 CT 7
Process: Lost Wax Casting
Material: SS304
Length Capacity: 20-500mm
Weight: 4kgs
Machining: Turning,Milling



Tolerance: ISO 8062 CT 9
Process: Shell Moulding
Material: Nodular Iron
Length Capacity: 50-1000mm
Weight: 11kgs
Machining: Turning,Milling



Tolerance: ISO 8062 CT 10
Process: Resin Sand
Material: Nodular Iron
Length Capacity: 50-1000mm
Weight: 10kgs
Machining: Turning,Milling



Tolerance: ISO 8062 CT 10
Process: Green Sand
Material: Gray Iron
Length Capacity: 50-1000mm
Weight: 8 kgs
Machining: Turning,Milling



Tolerance: ISO 8062 CT 7
Process: Lost Wax Casting
Material: SS316
Length Capacity: 20-500mm
Weight: 7kgs
Machining: Turning,Drilling,Milling



Tolerance: ISO 8062 CT 7
Process: Lost Wax Casting
Material: SS304L
Length Capacity: 20-500mm
Weight: 4kgs
Machining: Turning,Drilling,Milling
 Broching



Tolerance: ISO 8062 CT 7
Process: Lost Wax Casting
Material: SS304
Length Capacity: 20-500mm
Weight: 10kgs
Machining: Turning,Drilling,Milling



Tolerance: ISO 8062 CT 7
Process: Lost Wax Casting
Material: SS304L
Length Capacity: 20-500mm
Weight: 4kgs
Machining: Turning,Threading



Tolerance: ISO 8062 CT 7
Process: Lost Wax Casting
Material: SS304
Length Capacity: 20-500mm
Weight: 5kgs
Machining: Turning,Drilling,Milling



Tolerance: ISO 8062 CT 8
Process: Lost Wax Casting
Material: SS304L
Length Capacity: 20-500mm
Weight: 32kgs
Machining: Turning,CNC



Tolerance: ISO 8062 CT 6
Process: Lost Wax Casting
Material: 16MnCr5
Length Capacity: 20-500mm
Weight: 0.1kgs
Machining: Turning,Drilling,Milling



Tolerance: ISO 8062 CT 7
Process: Lost Wax Casting
Material: SS316L
Length Capacity: 20-500mm
Weight: 5kgs
Machining: Turning,CNC



Tolerance: ISO 8062 CT 7
Process: Lost Wax Casting
Material: Duplex SS
Length Capacity: 20-500mm
Weight: 7kgs
Machining: Turning,Drilling,Milling



Tolerance: ISO 8062 CT 7
Process: Lost Wax Casting
Material: 16MnCr5
Length Capacity: 20-500mm
Weight: 0.1kgs
Machining: Drilling,Broching



Tolerance: ISO 8062 CT 7
Process: Lost Wax Casting
Material: SS304
Length Capacity: 20-500mm
Weight: 1kgs
Machining: Turning,Drilling,Milling



Tolerance: ISO 8062 CT 6
Process: Lost Wax Casting
Material: 304
Length Capacity: 20-500mm
Weight: 5kgs
Machining: Milling,Drilling

